

# State of Wyoming Corner Record

(in compliance with the CORNER PERPETUATION AND FILING ACT, Wyoming Statutes, 1997, Section 33-29-140, et. seq. and the Rules and Regulations of the Board of Registration for Professional Engineers and Professional Land Surveyors)

Reverse side of this form may be used if more space is needed.

Record of original survey and citation of source of historical information (if corner is lost or obliterated). Description of corner monumentation evidence found and/or monument and accessories established to perpetuate the location of this corner. Sketch of relative location of monument, accessories, and reference points with course and distance to adjacent corner(s) (if determined in this survey). Method and rationale for reestablishment of lost or obliterated corner.

FOUND: GRANITE STONE WELL SET WITH 2 MARKS OF THE EAST AND 4 ON THE SOUTH. STONE MEASURED 9" X 6" X 7" ABOVE GROUND.

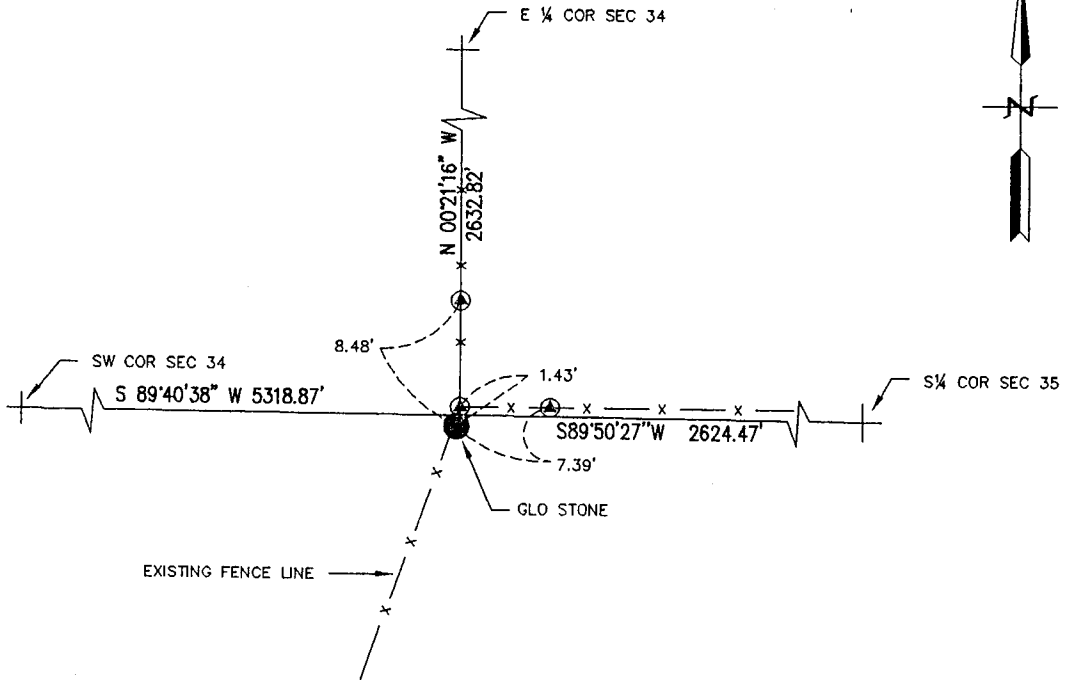
G.L.O. RECORD: SANDSTONE 20" X 12" X 8"

SET: NOTHING SET

RECORDED 10/23/2001 AT 11:46 AM REC# 306369 BK# 1615 PG# 801  
DEBRA K. LATHROP, CLERK OF LARAMIE COUNTY, WY PAGE 1 OF 1

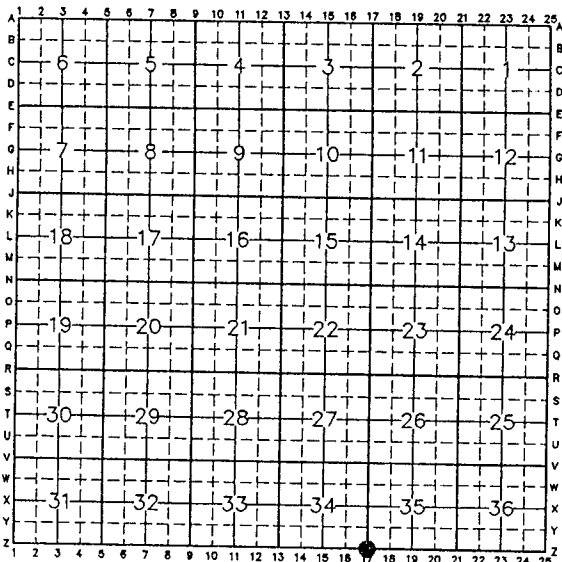
REFERENCES: SET AS SHOWN

T. 14 N.		
34	35	R
		6
		5
3	2	W
T. 13 N.		



Date of Field Work: 7-01 Office Reference: 2-2225.00

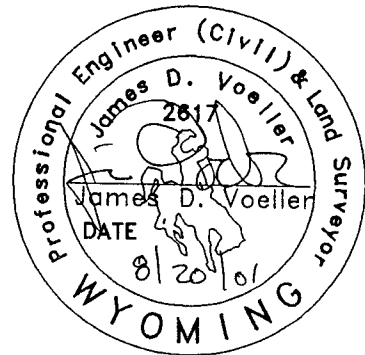
**CROSS INDEX DIAGRAM**



Firm/Agency, Address

James D. Voeller, P.E. & P.L.S.  
A.V.I., p.c.  
2035 Westland Road  
Cheyenne, WY 82001  
Telephone Number: (307) 637-3400

This corner record was prepared by me or under my direction and supervision.  
SEAL & SIGNATURE



Corner Name: SECTION CORNER Section: 34/35 14 65 T. 13 R. 65; 6th P.M. Cross-Index No.: A-17  
SBRPEPLS/PLSW: March 1994